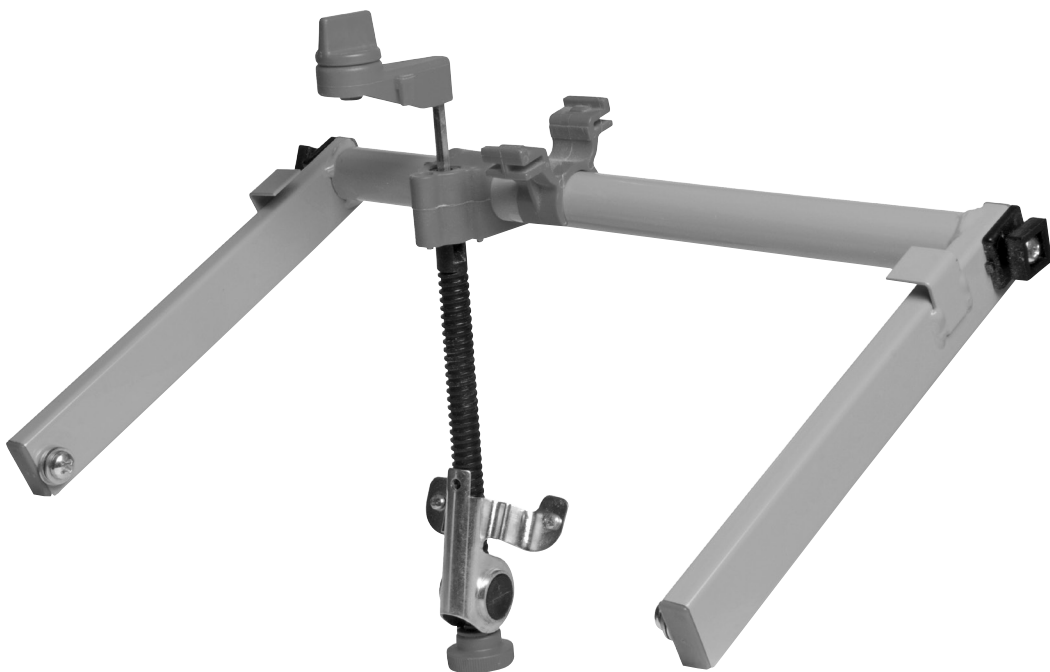




Blade Height Winder Kit

WCA 390

Operating & Safety Instructions



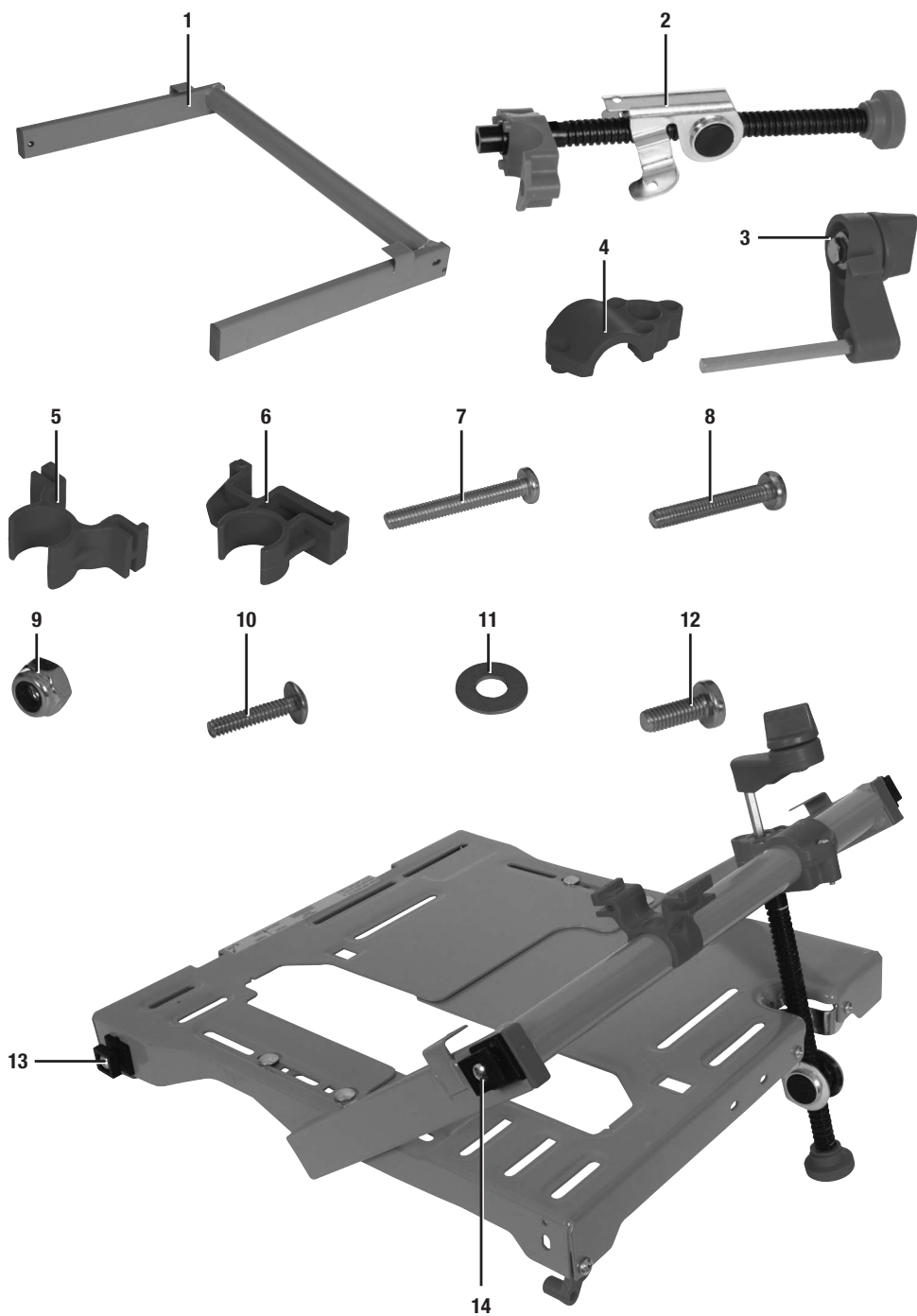
Version date: 23.05.17

BORN IN AUSTRALIA

Est. 1976

tritontools.com

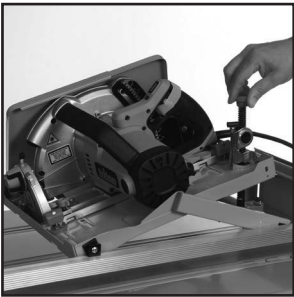




A



B



C



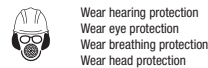
Original Instructions

Introduction

Thank you for purchasing this TRITON tool. This manual contains information necessary for safe and effective operation of this product. This product has unique features and, even if you are familiar with similar products, it is necessary to read this manual carefully to ensure you fully understand the instructions. Ensure all users of the tool read and fully understand this manual.

Description of Symbols

The rating plate on your tool may show symbols. These represent important information about the product or instructions on its use.



Technical Abbreviations Key

Nm	Newton metres (torque)
°	Degrees
Ø	Diameter
mm	millimetre
kg	kilogram

Specification

Model no.	WCA390
Material	Powder-coated steel
Dimensions (L x W x H)	240 x 380 x 40mm
Weight	1.1kg

As part of our ongoing product development, specifications of TRITON products may alter without notice.

General Safety

Save all warnings and instructions for future reference.

1) Work area safety

- a) **Keep work area clean and well lit.** Cluttered or dark areas invite accidents.
- b) **Do not operate tools in explosive atmospheres, such as in the presence of flammable liquids, gases or dust.**
- c) **Keep children and bystanders away while operating a powered tool.** Distractions can cause you to lose control.

2) Personal safety

- a) **Stay alert, watch what you are doing and use common sense when operating a powered tool. Do not use a powered tool while you are tired or under the influence of drugs, alcohol or medication.** A moment of inattention while operating a powered tool may result in serious personal injury.
- b) **Use personal protective equipment. Always wear eye protection. Protective equipment such as dust mask, non-skid safety shoes, hard hat, or hearing protection used for appropriate conditions will reduce personal injuries.**
- c) **Prevent unintentional starting.** Ensure the switch is in the off-position when not operating the tool and make use of other safety features which prevent unintentional starting
- d) **Remove any adjusting key or wrench before turning the powered tool on.** A wrench or a key left attached to a rotating part of the tool may result in personal injury.
- e) **Do not overreach. Keep proper footing and balance at all times.** This enables better control of the tool in unexpected situations.

- f) **Dress properly. Do not wear loose clothing or jewelry. Keep your hair, clothing and gloves away from moving parts.** Loose clothes, jewelry or long hair can be caught in moving parts.
- g) **If devices are provided for the connection of dust extraction and collection facilities, ensure these are connected and properly used.** Use of dust collection can reduce dust-related hazards.
- 3) **Tool use and care**
 - a) **Maintain tools. Check for misalignment or binding of moving parts, breakage of parts and any other condition that may affect the tool's operation. If damaged, have the tool repaired before use.** Many accidents are caused by poorly maintained tools.
 - b) **Keep cutting tools sharp and clean.** Properly maintained cutting tools with sharp cutting edges are less likely to bind and are easier to control.
 - c) **Use the tool's accessories and tool bits etc. in accordance with these instructions, taking into account the working conditions and the work to be performed.** Use of the tool for operations different from those intended could result in a hazardous situation.
- 4) **Service**
 - a) **Have your tool serviced by a qualified repair person using only identical replacement parts.** This will ensure that the safety of the tool is maintained.

Product Familiarisation

1. U-Frame (1)
2. Winder Assembly (1)
3. Winder Handle (1)
4. Top Saddle (1)
5. Chassis Hook Series 2000 (1)
6. Chassis hook MK3 (1)
7. Phillips Screws M4 x 30mm (3)
8. Phillips Screw M4 x 25mm (1)
9. Nyloc Nuts (4)
10. Phillips Screws 3/16" x 7/8" (2)
11. Washers (6)
12. Phillips Screws M6 x 16mm (2)
13. Bearing Assemblies (2)
14. Phillips Screws M4 x 10mm (3)


Intended Use

Blade Height Winder Kit for quick and precise blade height adjustment. Control blade height by winder through the table. Compatible with Workcentre System Series 2000, including WCA201, WCA200, WCA001.

Unpacking Your Tool

- Carefully unpack and inspect your new tool. Familiarise yourself with all its features and functions
- Ensure that all parts of the tool are present and in good condition. If any parts are missing or damaged, have such parts replaced before attempting to use this tool

Before Use

 **WARNING:** Ensure all powered tools used with this product are disconnected from the power supply before installing the kit to the Workcentre.

Assembly

Release the clamp knobs and remove the saw from the chassis. Place the chassis upside down on a flat working surface.

Step 1

Using a Phillips screwdriver, remove the steel bolt and two sets of bearings (with red spacers) from the rear of the chassis. Retain the M4 screws and flange nuts for use in Step 4. Fit the Bearing Assemblies (13) (without their red plastic spacers) to the U-Frame (1) using the Phillips Screws 3/16" x 7/8" (10).

Step 2

Loosen the two bearings at the front of the chassis and rotate them 180° (with the locating tabs pointing the opposite way). Re-tighten.

Step 3

Fit the U-Frame (tabs upwards) to the slide chassis using the Phillips Screws M6 x 16mm (12) and 6 Washers (11). Note that the chassis and U-Frame are spaced apart by two washers on each side. Do not over tighten.

Step 4

Attach the bracket on the Winder Assembly (2) on the inside of the U-shaped cut-out at the rear of chassis using the 3 Phillips Screws M4 x 10mm (14) retained from Step 1.

Step 5

Attach the U-Frame to the Winder Assembly by fastening the Top Saddle (4) into position using the Phillips Screws M4 x 30mm (7), Phillips Screw M4 x 25mm (8) and Nylon Nuts (9). Fully tighten the three longer screws, but only tighten the shorter screw to a point where the saddle is firm yet still free to pivot on the tube.

Step 6

Push-fit the appropriate Chassis Hook (5 or 6 depending on your Workcentre) on the tube of the U-Frame, as shown.


Step 7

Clamp the saw back into the chassis and fit the chassis to the Workcentre in the rip position. Slide the chassis half-way along the bearing channels and while lowering the table-top ensure that the rear brace on the underside of the table locates in the Chassis Hook. You may need to slide the hook sideways along the tube until it is clear of any table protrusions. Mark the bearing channels at this location to aid in future set ups. Lock down the table top.

Step 8

Check the alignment of the saw and make any required adjustments as detailed in the Workcentre manual. Set the saw to full-depth and carry out some test cuts.

Operation

 **WARNING:** ALWAYS ensure the power tool is disconnected from the power source before making any adjustments.

- 1. With the saw set at full depth (Image A), push/fit the Winder Handle (3) through the saw slot and into the hex hole on the top of the winder mechanism
- 2. If a dust bag is fitted, punch a hole through it using the shaft of the Winder Handle
- 3. Use the Winder Handle to set the required cut depth in the table saw mode, as shown (Image B)
- 4. When not in use, the Winder Handle can be stored by its clip in the table height adjustment slot on the Workcentre end panel (Image C)

Warranty

Our goods come with guarantees that cannot be excluded under the Australian Consumer Law. You are entitled to a replacement or refund for a major failure and for compensation for any other reasonably foreseeable loss or damage. You are also entitled to have the goods repaired or replaced if the goods fail to be of acceptable quality and the failure does not amount to a major failure.

This product is covered by a 36 month warranty.

This warranty will not apply:


- (i) where this product has been subjected to misuse, abuse, accident or want of care;
- (ii) where this product has been used for a purpose for which it was not designed or is not suited;
- (iii) where the service of this product has been undertaken by a non-authorised person or company or if non-approved parts have been used;
- (iv) where this product has been used for industrial purposes.

Should service become necessary during the warranty period, the purchaser should contact an Authorised Service Centre or White International. In order to obtain warranty service, the purchaser must present the store receipt showing the name of the retailer and the date of purchase.

Accessories

- A range of accessories, including TRITON saws and Workcentres, is available from your Triton stockist. For your own safety, use only genuine Triton accessories. Spare parts can be purchased from your Triton dealer or online at www.toolsparesonline.com

Maintenance

 **WARNING:** Always disconnect the tool from the power supply before carrying out any maintenance/cleaning.

General inspection

- Regularly check that all the fixing screws are tight. They may vibrate loose over time

Cleaning

- Keep your tool clean at all times
- Clean the body of your tool with a soft brush or dry cloth
- Never use caustic agents to clean plastic parts. If dry cleaning is not sufficient, a mild detergent on a damp cloth is recommended
- Thoroughly dry before use

Storage

- After use, store this tool and its accessories in a dry, secure place out of the reach of children

Disposal

Always adhere to national regulations when disposing of power tools that are no longer functional and are not viable for repair.

- Do not dispose of power tools, or other waste electrical and electronic equipment (WEEE), with household waste
- Contact your local waste disposal authority for information on the correct way to dispose of power tools

The period of the warranty begins from the original date of purchase, notwithstanding any subsequent repair or parts replacement.

Purchaser shall be responsible for all transport charges to and from the Authorised Service Centre.

Damage in transit is not covered by this warranty. The purchaser should remove from the product any liquids (if applicable) before sending the tool for service or repair. The tool should be packed securely to prevent damage.

Warranty Exclusions

Wear parts or service related parts required when performing normal and regular maintenance of this product are not covered by warranty unless it is found to be defective by an Authorised Service Centre. These include, but are not limited to: Blades

Distributed in Australia by White International.

PO Box 304 Milperra LPD, NSW Australia, 2214

Ph:1800 251 338

The White International Policy is one of continuous improvement and the company reserves the right to alter designs, colours and specifications without notice

Guarantee

To register your guarantee visit our web site at www.tritontools.com* and enter your details.

Your details will be included on our mailing list (unless indicated otherwise) for information on future releases. Details provided will not be made available to any third party.

Purchase Record

Date of Purchase: ___ / ___ / ___

Model: WCA390 Retain your receipt as proof of purchase

Triton Precision Power Tools guarantees to the purchaser of this product that if any part proves to be defective due to faulty materials or workmanship within 3 YEARS from the date of original purchase, Triton will repair, or at its discretion replace, the faulty part free of charge.

This guarantee does not apply to commercial use nor does it extend to normal wear and tear or damage as a result of accident, abuse or misuse.

* Register online within 30 days.

Terms & conditions apply.

This does not affect your statutory rights

Notes:

