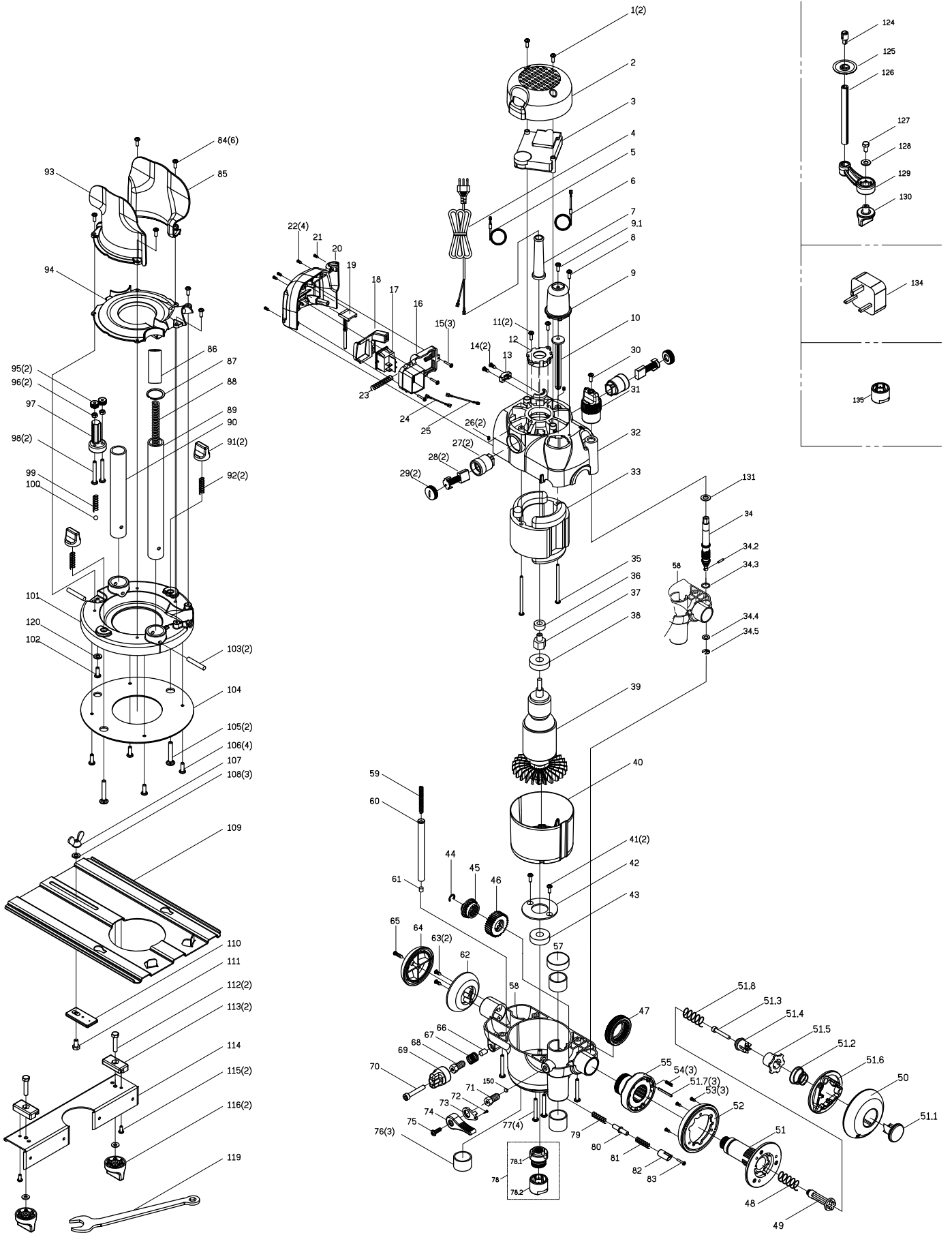




TRA001 - Plunge Router





TRA001 - Plunge Router

No.	DESCRIPTION.	Qty.
1	SCREW MOTOR TOP COVER	2
2	MOTOR TOP COVER	1
3	SPEED CONTROLLER	1
4	POWER CORD	1
5	COPPER RING B(BRUSH CONNECTION B)	1
6	COPPER RING A(BRUSH CONNECTION A)	1
7	CORD GUARD	1
8	SCREW RACK POST CAP	1
9	RACK POST CAP	1
9.1	FLAT HD SELF-TAP SCREW	1
10	RACK POST SPRING GUIDE	1
11	SCRWE UPPER ARMATUREBEAPLT	2
12	UPPER ARMATURE BEARING PLATE	1
13	CORD RESTRAIN	1
14	SCREW CORD RESTRAINT	2
15	SCREW SWITCH MOUNT	3
16	SWITCH MOUNT (TRA019)	1
17	WATER-PROOF SWITCH	1
18	SWITCH SLIDE COVER(TRA020)	1
19	DEPTH STOP SPRING GUIDE	1
20	SWITCH END HOUSING COVER(TRA006)	1
21	SCREW CORD RESTRAIN	1
22	SCREW SWITCH COVER	4
23	SPRING SWITCH COVER	1
24	BROWN CONNECT WIRE	1
25	BLUE CONNECT WIRE	1
26	SET SCREW	2
27	HOLDER BRUSH	2
28	BRUSH	2
29	CAP BRUSH	2
30	PAN HD SCREW	1
31	MICRO ADJUST KNOB	1
32	UPPER MOTOR BODY	1
33	FIELD COIL	1
34	WORM GEAR (START 2010)	1



TRA001 - Plunge Router

No.	DESCRIPTION.	Qty.
34.2	PIN	1
34.3	O-TYPE RING	1
34.4	FLAT WASHER	1
34.5	E RING	1
35	SELF-TAP PAN HD SCREW/WASHER	2
36	MAGNET RING MOUNT	1
37	MAGNET RING MOUNT ASS'Y	1
38	BALL BEARING	1
39	ARMATURE ASS'Y	1
40	FAN SHROUD	1
41	SCREW LOWER ARMATURE BEAPLT.	2
42	LOWER ARMATURE BEARINGPLATE	1
43	BALL BEARING	1
44	E-RING (ETW)	1
45	PLUNGE HANDLE CLUTCH	1
46	PLUNGE HANDLE PINION	1
47	WORM WHEEL METRIC CWDOWN	1
48	SPRING PLUNGE HANDLE CLUTCH SHAFT	1
49	PLUNGE HANDLE CLUTCH SHAFT	1
50	PLUNGE HANDLE OUTER RUBBERISED	1
51	PLUNGE HANDLE SHAFT	1
51.1	PLUNGE SELECT PUSH BUTTON	1
51.2	PLUNGE SELECT BUTTON SPRING	1
51.3	SELF TAPPING SCREW	1
51.4	PLUNGE HANDLE ROTOR	1
51.5	PLUNGE HANDLE STATOR	1
51.6	PLUNGE HANDLE LOCKOUT	1
51.7	PIN	3
51.8	SPRING PLUNGE HANDLE ROTOR	1
52	PLUNGE HANDLE INNER	1
53	SELF TAPPING SCREW	3
54	SPRING RELEASE RING	3
55	MICRO RELEASE RING	1
57	RACK AND POST BUSH	1
58	LOWER MOTOR BODY & BUSH ASS'Y	1



TRA001 - Plunge Router

No.	DESCRIPTION.	Qty.
59	SPRING DEPTH STOP ROD	1
60	DEPTH STOP ROD	1
61	DEPTH STOP ROD PLUG	1
62	FIXED HANDLE INNER	1
63	PAN HD SCREW	2
64	FIXED HANDLE OUTERRUBBERISED	1
65	SELF TAPPING SCREW	1
66	DEPTH STOP BRASS PLUG	1
67	DEPTH SPRING	1
68	PLUNGE LOCK BOLT	1
69	DEPTH STOP KNOB	1
70	HEX SOC HD SCREW	1
71	PLUNGE LOCK BOLT	1
72	SCREW PLUNGE LOCK BOLTPLATE	1
73	PLUNGE LOCK BOLT PLATE	1
74	PLUNGE LOCK LEVER	1
75	SCREW PLUNGE LOCK BOLT	1
76	BUSH, RACK POST	3
77	SELF-TAP PAN HD SCREW	4
78	1/2" CHUCK ASS'Y	1
78.1	COLLET SHAFT	1
78.2	1/2" MOF COLLET	1
79	INNER SPRING,SHAFT LOCK	1
80	SHAFT LOCK PIN	1
81	SPRING SHAFT LOCK BUTTON	1
82	SHAFT LOCK BUTTON	1
83	SCREW SHAFT LOCK BUTTON	1
84	PAN HD SCREW	6
85	REAR CHIP SHIELD	1
86	PLASTIC BAG	1
87	RETAIN RING	1
88	SPRING RACK POST	1
89	RACK POST	1
90	SMOOTH POST	1
91	FENCE ATTACHMENT KONB	2



TRA001 - Plunge Router

No.	DESCRIPTION.	Qty.
92	SPRING FENCE ATTACHMENT KNOB	2
93	FRONT CHIP SHIELD	1
94	VACUUM SHIELD BIG THROAT	1
99	SPRING FENCE ATTACHMENT KNOB	1
100	TURRET DETENT BALL	1
101	BASE	1
102	SELF TAPPING SCREW	1
103	SPRING PIN	2
104	BASE PLATE	1
105	M6X40MM COACH BOLT	2
106	SCREW	4
107	BUTTERFLY NUT	1
108	WASHER FENCE CIRCLE	3
109	FENCE PLATE	1
110	FENCE CIRCLE SLIDER	1
111	SCREW FENCE CIRCLESIDER	1
112	HEX HD SCREW	2
113	FENCE SLIDE CLAMP	2
114	FENCE SLIDE FACE	1
115	SELF-TAP PAN HD SCREW	2
116	FENCE SLIDE KONB	2
119	WRENCH	1
120	WASHER	1
124	MICRO HEIGHT UNIVERSAL	1
125	MICRO HEIGHT DRIVE TUBE	1
126	MICRO HEIGHT DRIVE TUBE	1
127	SELF TAPPING SCREW	1
128	FLAT WASHER	1
129	MICRO HEIGHT CRANK ARM	1
130	MICRO HEIGHT ADJUSTERKNOB	1
131	WASHER	1
134	SCP PLUG	1
135	12MM MOF COLLET	1
150	COPPER PAD	1